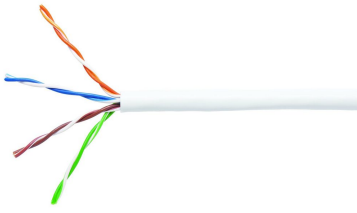


6-219590-2 | CS24CM WHT C5E 4/24 U/UTP CPK 305M



Copper Cable, category 5e, 4 pair, U/UTP, CM rated, 24 AWG, 1000 ft, white

Product Classification

Regional Availability	Asia
Portfolio	NETCONNECT®
Product Type	Twisted pair cable
Product Series	510 Series

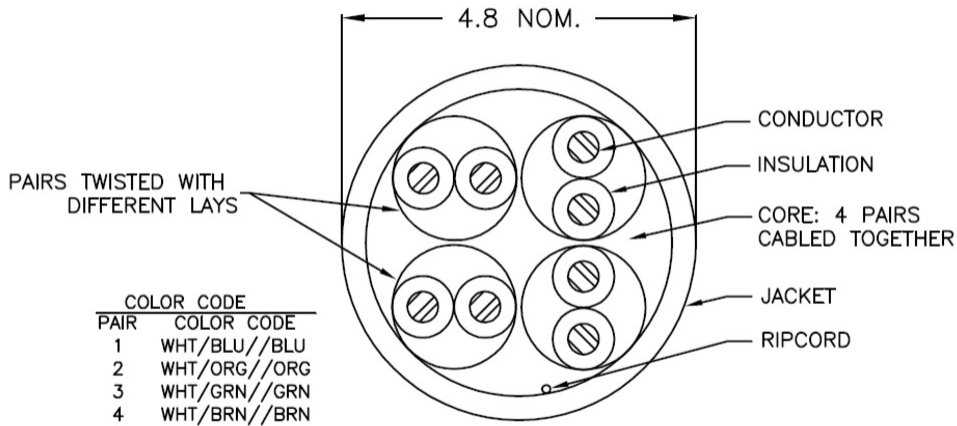
General Specifications

Product Number	510M
ANSI/TIA Category	5e
Cable Component Type	Horizontal
Cable Type	U/UTP (unshielded)
Conductor Type, singles	Solid
Conductors, quantity	8
Jacket Color	White
Pairs, quantity	4
Transmission Standards	ANSI/TIA-568.2-D GENELEC EN 50288-6-1 ISO/IEC 11801 Class D

Dimensions

Cable Length	304.8 m 1000 ft
Diameter Over Jacket, nominal	4.902 mm 0.193 in
Conductor Gauge, singles	24 AWG

Cross Section Drawing



Electrical Specifications

Operating Voltage, maximum

80 V

Remote Powering

Fully complies with the recommendations set forth by IEEE 802.3bt (Type 4) for the safe delivery of power over LAN cable when installed according to ISO/IEC 14763-2, CENELEC EN 50174-1, CENELEC EN 50174-2 or TIA TSB-184-A

Electrical Performance

CS CommScope value	IL Insertion Loss (dB/100m)	ACR Attenuation to Crosstalk Ratio (dB/100m)
Std Standard value (listed under the Transmission Standards in the Electrical Specifications above)	RL Return Loss (dB)	ACRF Attenuation to Crosstalk Ratio - Far End (dB/100m)
Typ Typical value	NEXT Near End Crosstalk (dB/100m)	PSACR Power Sum Attenuation to Crosstalk Ratio (dB/100m)
	PSNEXT Power Sum Near End Crosstalk (dB/100m)	PSACRF Insertion Loss (dB/100m)

6-219590-2 | CS24CM WHT C5E 4/24 U/UTP CPK 305M

FREQUENCY	IL TYP	IL CS	IL STD	NEXT TYP	NEXT CS	NEXT STD	ACR TYP	ACR CS	ACR STD	PSNEXT TYP	PSNEXT CS	PSNEXT STD	PSACR TYP	PSACR CS	PSACR STD	ACRF TYP	ACRF CS	ACRF STD	PSACRF TYP	PSACRF CS	PSACRF STD	RL TYP	RL CS	RL STD
1.00 MHz			2			74.3			72.3			72.3			70.3			67.8			64.8			20
4.00 MHz			3.8			65.3			61.5			63.3			59.5			55.8			52.8			23
8.00 MHz			5.3			60.8			55.5			58.8			53.5			49.7			46.7			24.5
10.00 MHz			6			59.3			53.3			57.3			51.3			47.8			44.8			25
16.00 MHz			7.6			56.2			48.6			54.2			46.6			43.7			40.7			25
20.00 MHz			8.5			54.8			46.3			52.8			44.3			41.8			38.8			25
25.00 MHz			9.5			53.3			43.8			51.3			41.8			39.8			36.8			24.3
31.25 MHz			10.7			51.9			41.2			49.9			39.2			37.9			34.9			23.6
62.50 MHz			15.4			47.4			32			45.4			30			31.9			28.9			21.5
100.00 MHz			19.8			44.3			24.5			42.3			22.5			27.8			24.8			20.1
200.00 MHz			29			39.8			10.8			37.8			8.8			21.8			18.8			18
250.00 MHz			32.8			38.3			5.5			36.3			3.5			19.8			16.8			17.3

Material Specifications

Conductor Material	Bare copper
Insulation Material	Polyolefin
Jacket Material	PVC

Environmental Specifications

Operating Temperature	-20 °C to +60 °C (-4 °F to +140 °F)
Flame Test Method	CM

Packaging and Weights

Packaging Type	Reelex
-----------------------	--------

Regulatory Compliance/Certifications

Agency	Classification
CHINA-ROHS	Below maximum concentration value
REACH-SVHC	Compliant as per SVHC revision on www.commscope.com/ProductCompliance
ROHS	Compliant
UK-ROHS	Compliant

